

ANT-HP Series

Innovative, High quality, Best price



ANT-HP7030N

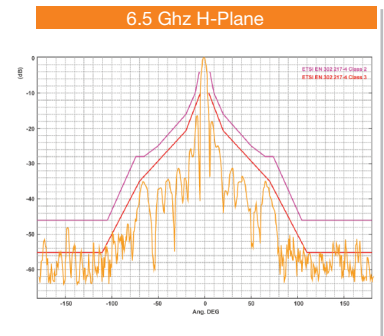
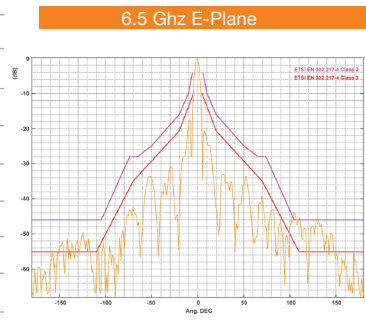
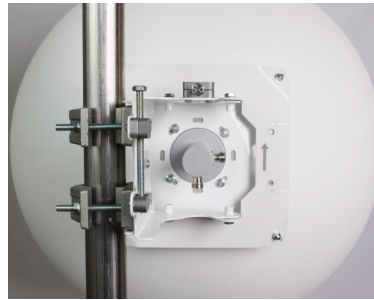
Dual Polarity High Performance Dish
5.8 - 7.2 GHz, 30 dBi

Features:

- Wide Band Operation
- Vertically and Horizontally Polarized
- Best Solution for **Noisy** Environments

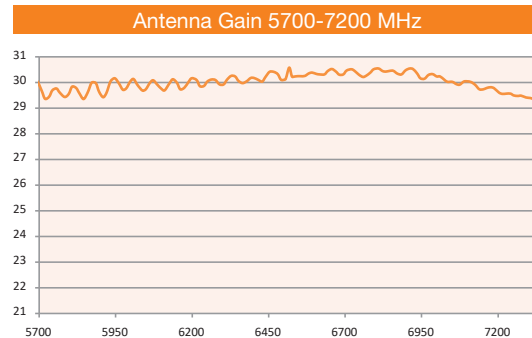
Electrical Specification

| | |
|-------------------------|---------------------------|
| Frequency Range: | 5800 - 7200 MHz |
| Gain: | 30 dBi |
| 3dB Beamwidth: | 5.0°(typ) |
| VSWR: | 1.4:1(typ) |
| Impedance: | 50 Ohms |
| Input Power: | 25 W |
| Connector: | 2 x N-Female |
| Sidelobes: | ETSI EN 302 217-4 class 2 |
| Front to Back Ratio: | 58.3 dB |
| Cross Polarization: | 28 dB (max), 32 (typ) |
| Port to Port Isolation: | 30 dB (max), 45 (typ) |

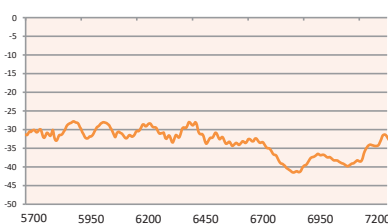


Mechanical Specification

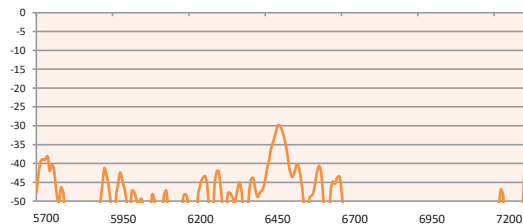
| | |
|--------------------------|-------------------------------|
| Size/Diameter: | 680 mm |
| Weight(incl. bracket): | 5.9 Kg |
| Wind Loading(Operating): | 130 Km/h |
| Wind Loading(Survival): | 190 Km/h |
| Operating Temperature: | -50°C to 70°C |
| Mounting Kit/Style: | Included/Pole Mount |
| Pole Diameter: | 25-60 mm |
| Additional Features: | Accurate Pan & Tilt alignment |



Antenna Cross Polarity 5700-7200 MHz



Antenna Port to Port Isolation 5700-7200 MHz



Antenna VSWR 5700-7200 MHz

